

Attachment A2

Commercial/Industrial construction

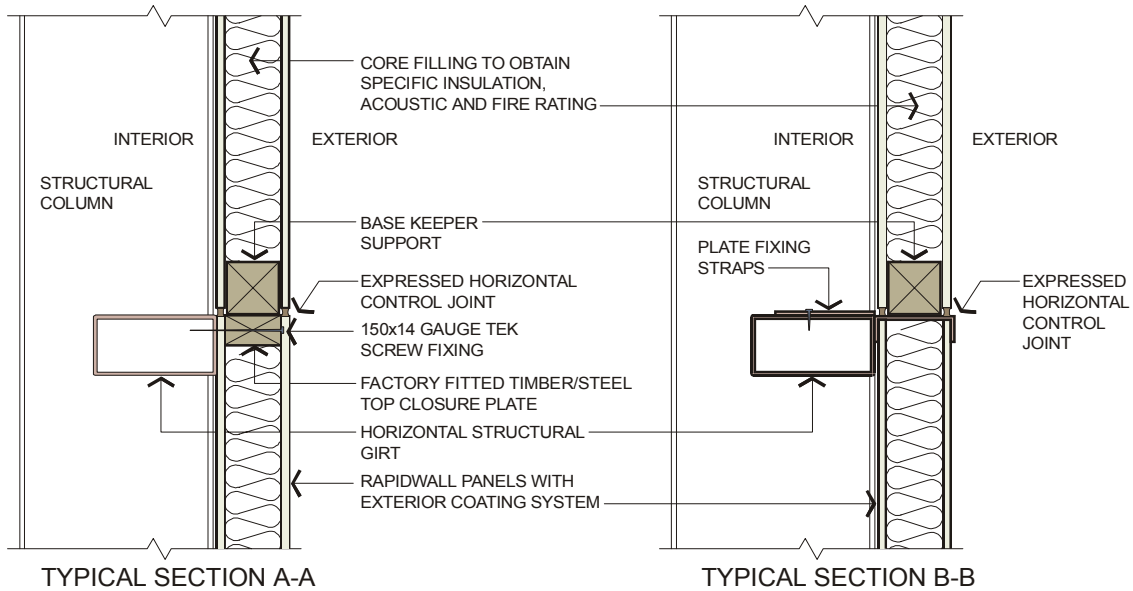
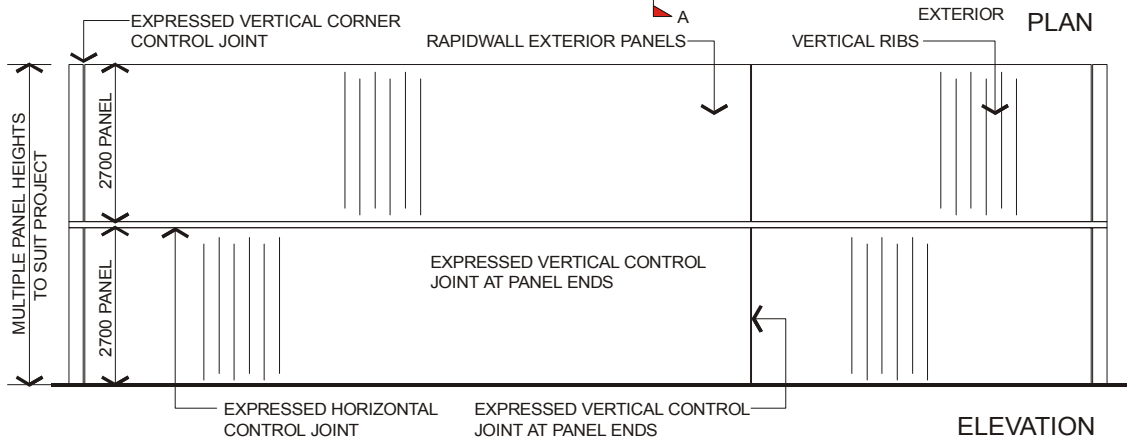
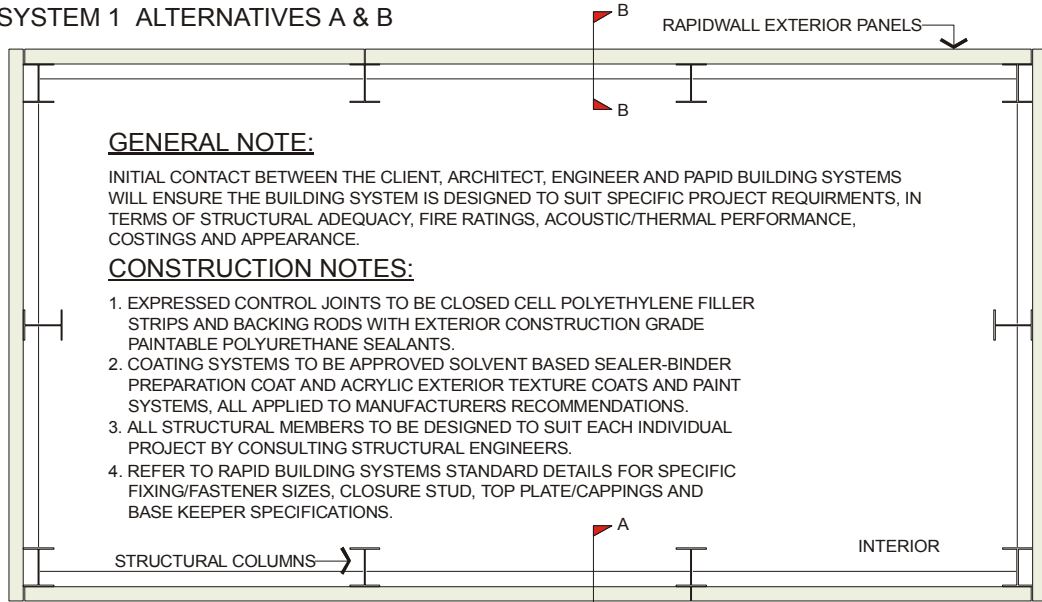




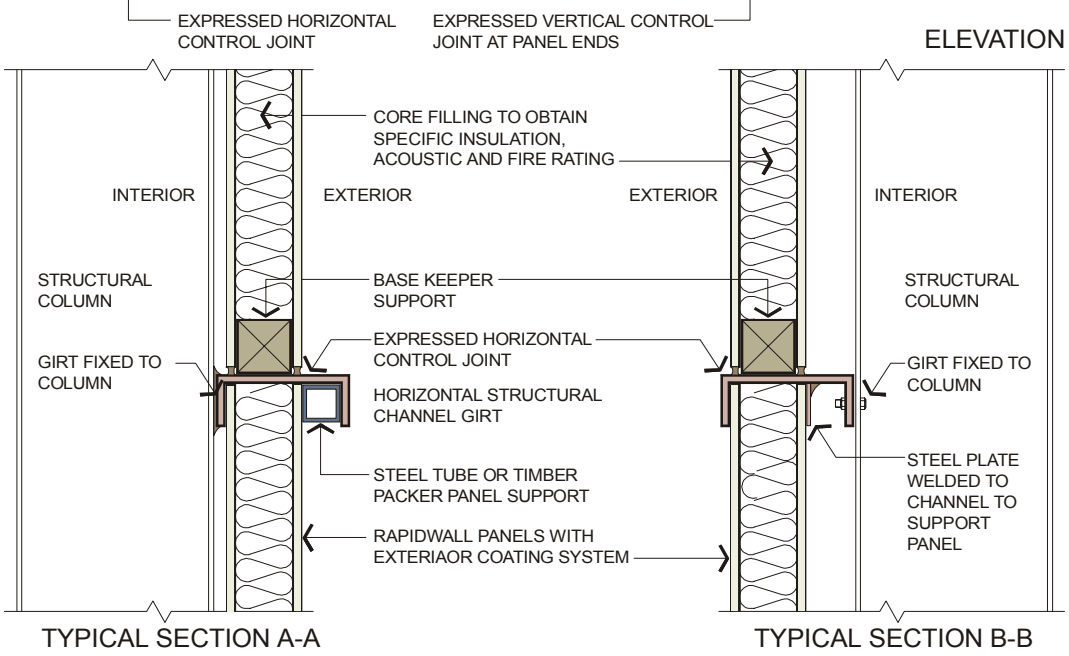
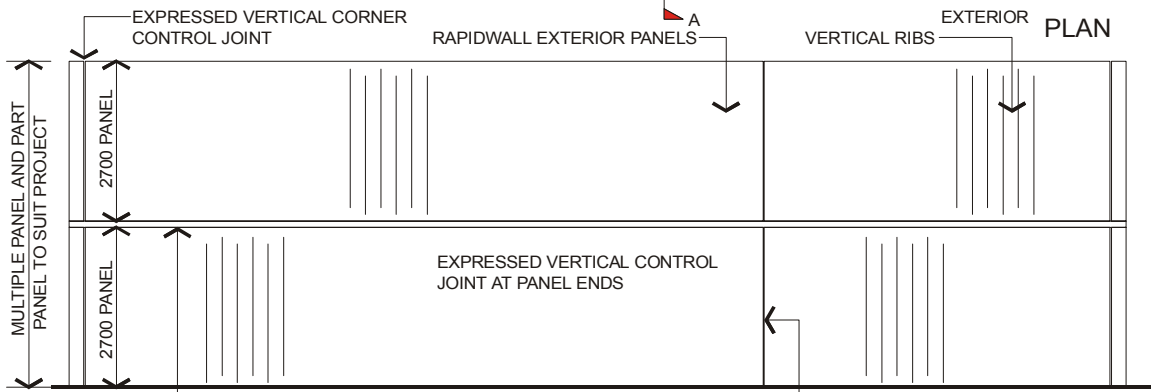
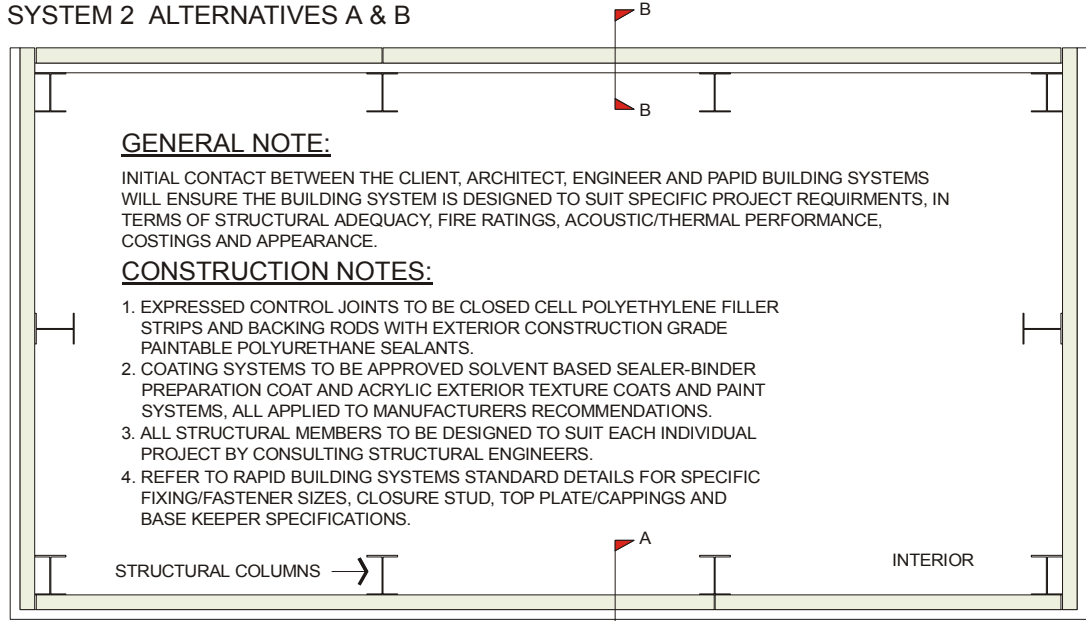
RAPIDWALL

COMMERCIAL/INDUSTRIAL CONSTRUCTION

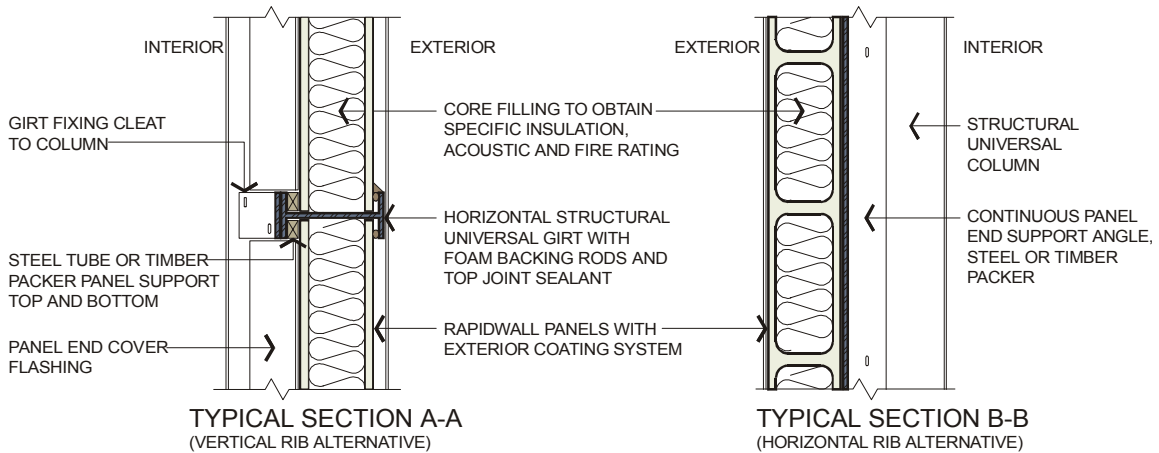
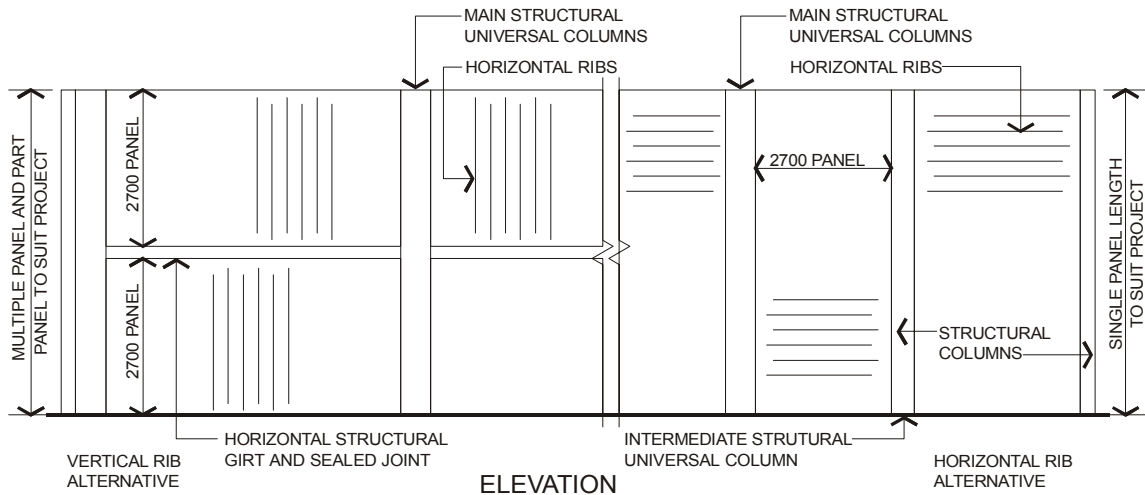
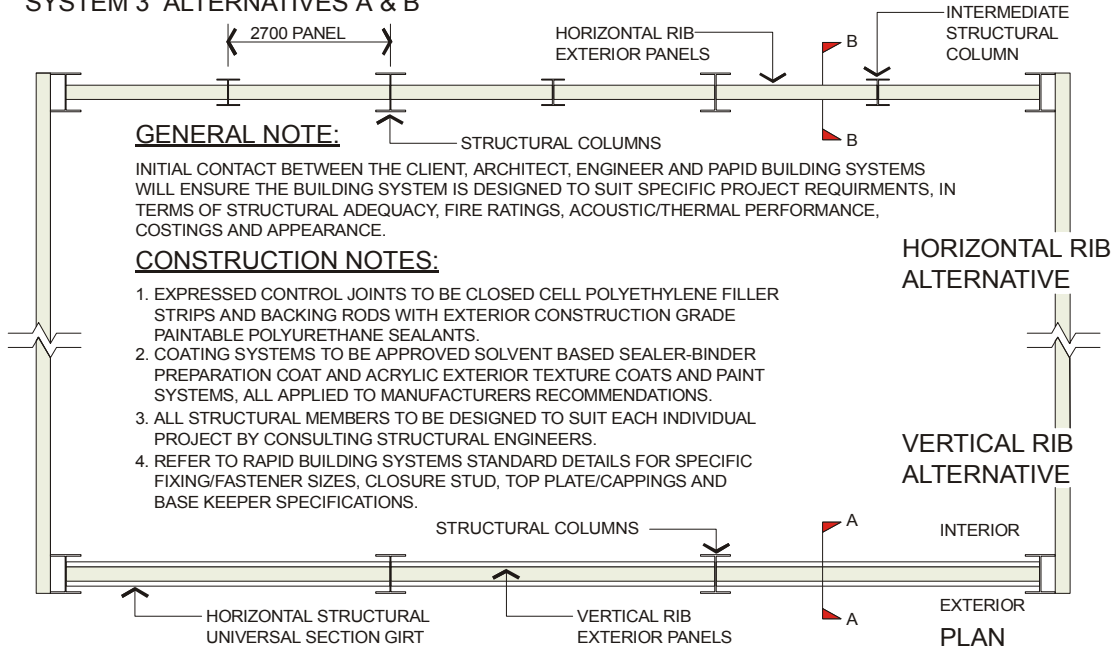
SYSTEM 1 ALTERNATIVES A & B



SYSTEM 2 ALTERNATIVES A & B



SYSTEM 3 ALTERNATIVES A & B



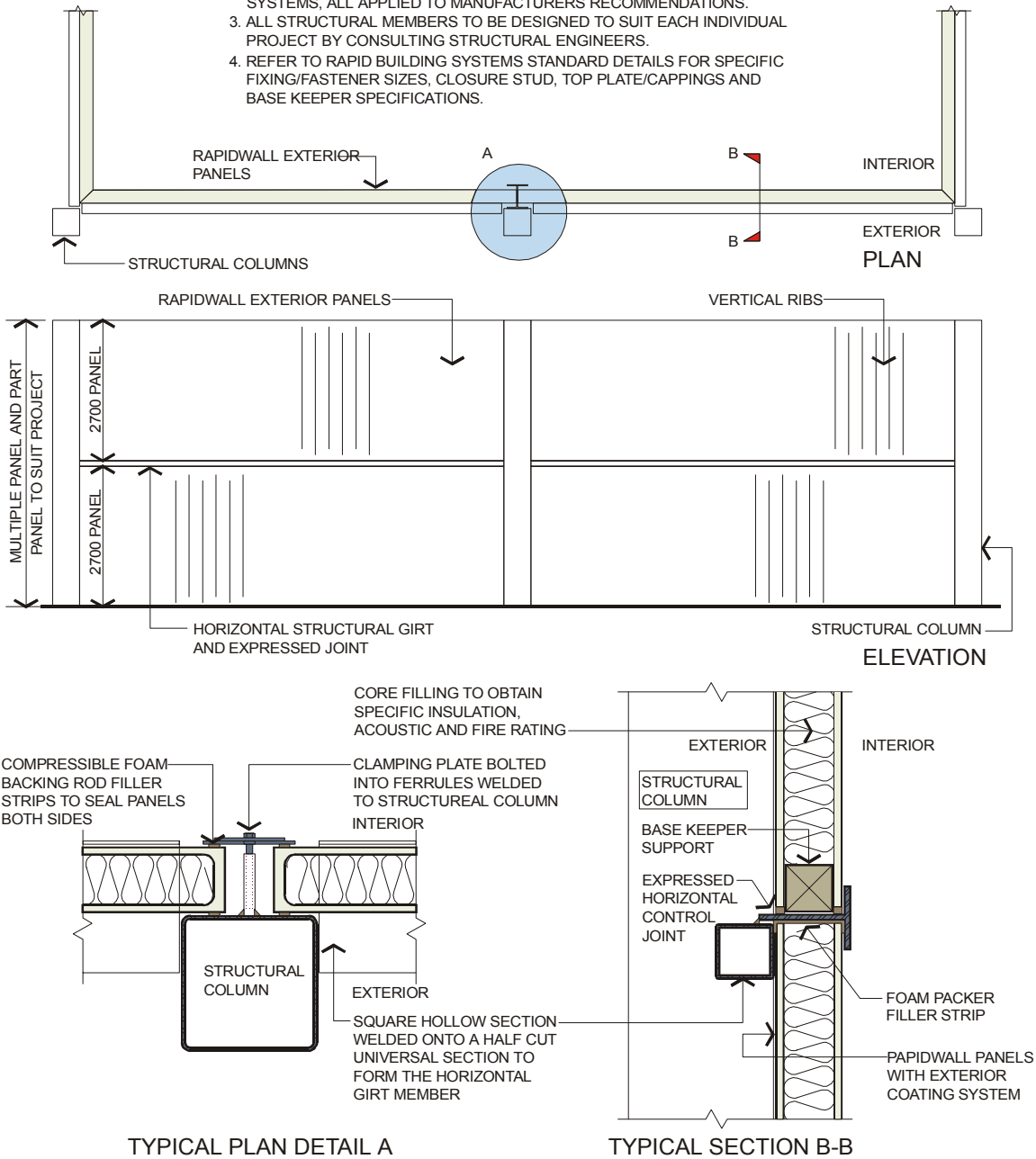
SYSTEM 4

GENERAL NOTE:

INITIAL CONTACT BETWEEN THE CLIENT, ARCHITECT, ENGINEER AND RAPID BUILDING SYSTEMS WILL ENSURE THE BUILDING SYSTEM IS DESIGNED TO SUIT SPECIFIC PROJECT REQUIREMENTS, IN TERMS OF STRUCTURAL ADEQUACY, FIRE RATINGS, ACOUSTIC/THERMAL PERFORMANCE, COSTINGS AND APPEARANCE.

CONSTRUCTION NOTES:

1. EXPRESSED CONTROL JOINTS TO BE CLOSED CELL POLYETHYLENE FILLER STRIPS AND BACKING RODS WITH EXTERIOR CONSTRUCTION GRADE PAINTABLE POLYURETHANE SEALANTS.
2. COATING SYSTEMS TO BE APPROVED SOLVENT BASED SEALER-BINDER PREPARATION COAT AND ACRYLIC EXTERIOR TEXTURE COATS AND PAINT SYSTEMS, ALL APPLIED TO MANUFACTURERS RECOMMENDATIONS.
3. ALL STRUCTURAL MEMBERS TO BE DESIGNED TO SUIT EACH INDIVIDUAL PROJECT BY CONSULTING STRUCTURAL ENGINEERS.
4. REFER TO RAPID BUILDING SYSTEMS STANDARD DETAILS FOR SPECIFIC FIXING/FASTENER SIZES, CLOSURE STUD, TOP PLATE/CAPPINGS AND BASE KEEPER SPECIFICATIONS.



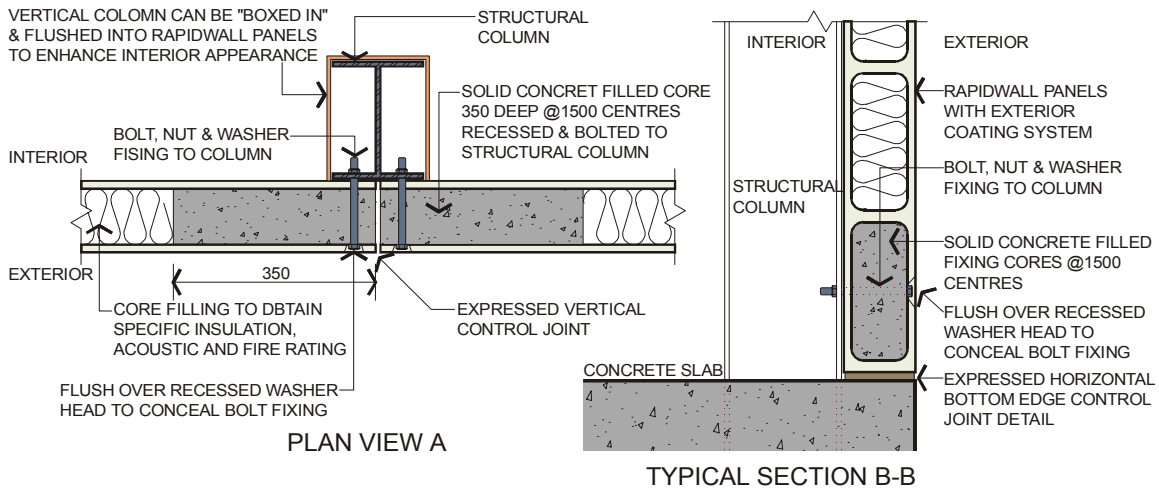
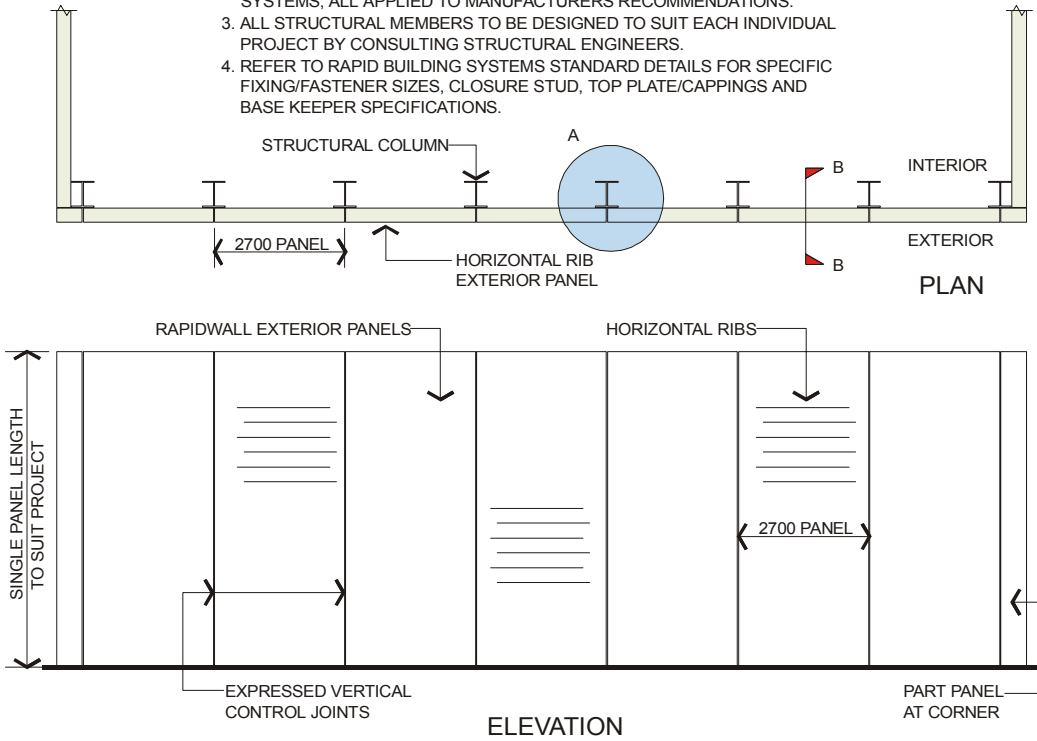
SYSTEM 5

GENERAL NOTE:

INITIAL CONTACT BETWEEN THE CLIENT, ARCHITECT, ENGINEER AND RAPID BUILDING SYSTEMS WILL ENSURE THE BUILDING SYSTEM IS DESIGNED TO SUIT SPECIFIC PROJECT REQUIREMENTS, IN TERMS OF STRUCTURAL ADEQUACY, FIRE RATINGS, ACOUSTIC/THERMAL PERFORMANCE, COSTINGS AND APPEARANCE.

CONSTRUCTION NOTES:

1. EXPRESSED CONTROL JOINTS TO BE CLOSED CELL POLYETHYLENE FILLER STRIPS AND BACKING RODS WITH EXTERIOR CONSTRUCTION GRADE PAINTABLE POLYURETHANE SEALANTS.
2. COATING SYSTEMS TO BE APPROVED SOLVENT BASED SEALER-BINDER PREPARATION COAT AND ACRYLIC EXTERIOR TEXTURE COATS AND PAINT SYSTEMS, ALL APPLIED TO MANUFACTURERS RECOMMENDATIONS.
3. ALL STRUCTURAL MEMBERS TO BE DESIGNED TO SUIT EACH INDIVIDUAL PROJECT BY CONSULTING STRUCTURAL ENGINEERS.
4. REFER TO RAPID BUILDING SYSTEMS STANDARD DETAILS FOR SPECIFIC FIXING/FASTENER SIZES, CLOSURE STUD, TOP PLATE/CAPPINGS AND BASE KEEPER SPECIFICATIONS.



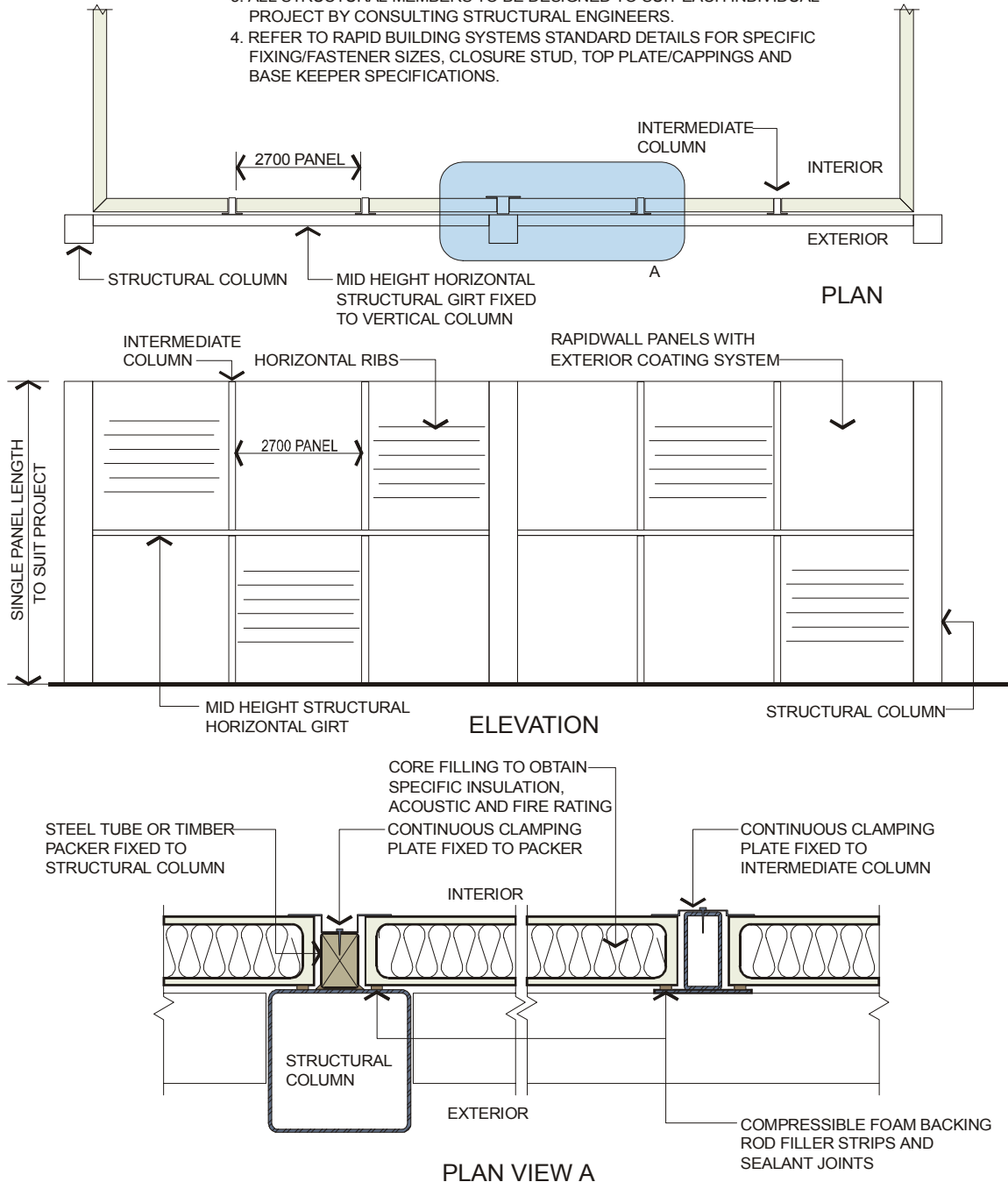
SYSTEM 6

GENERAL NOTE:

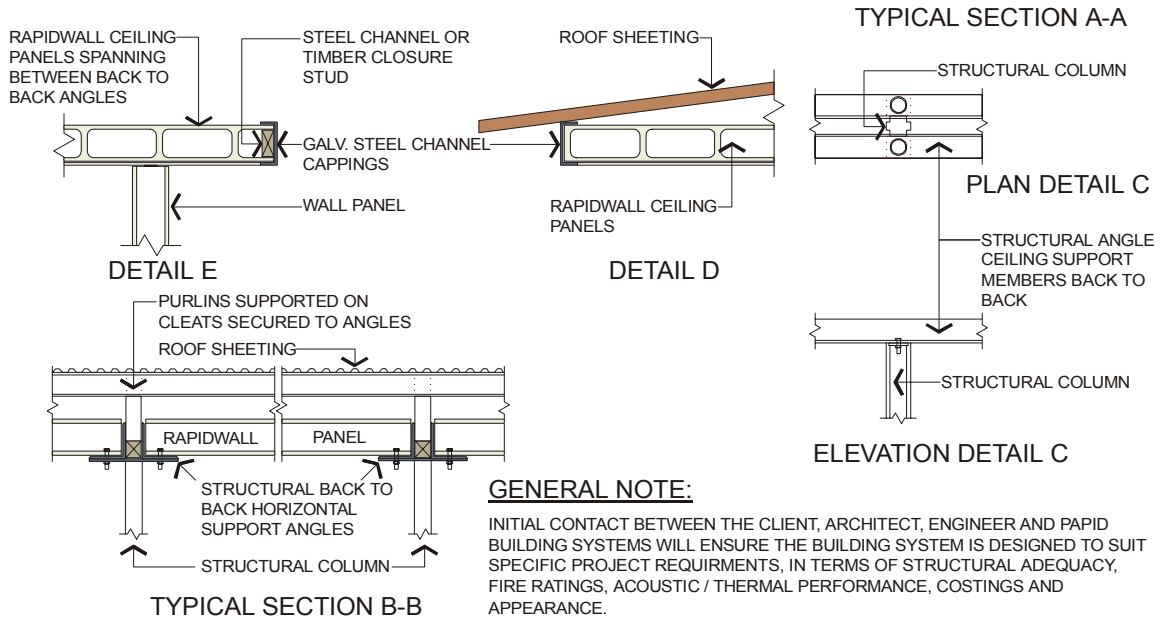
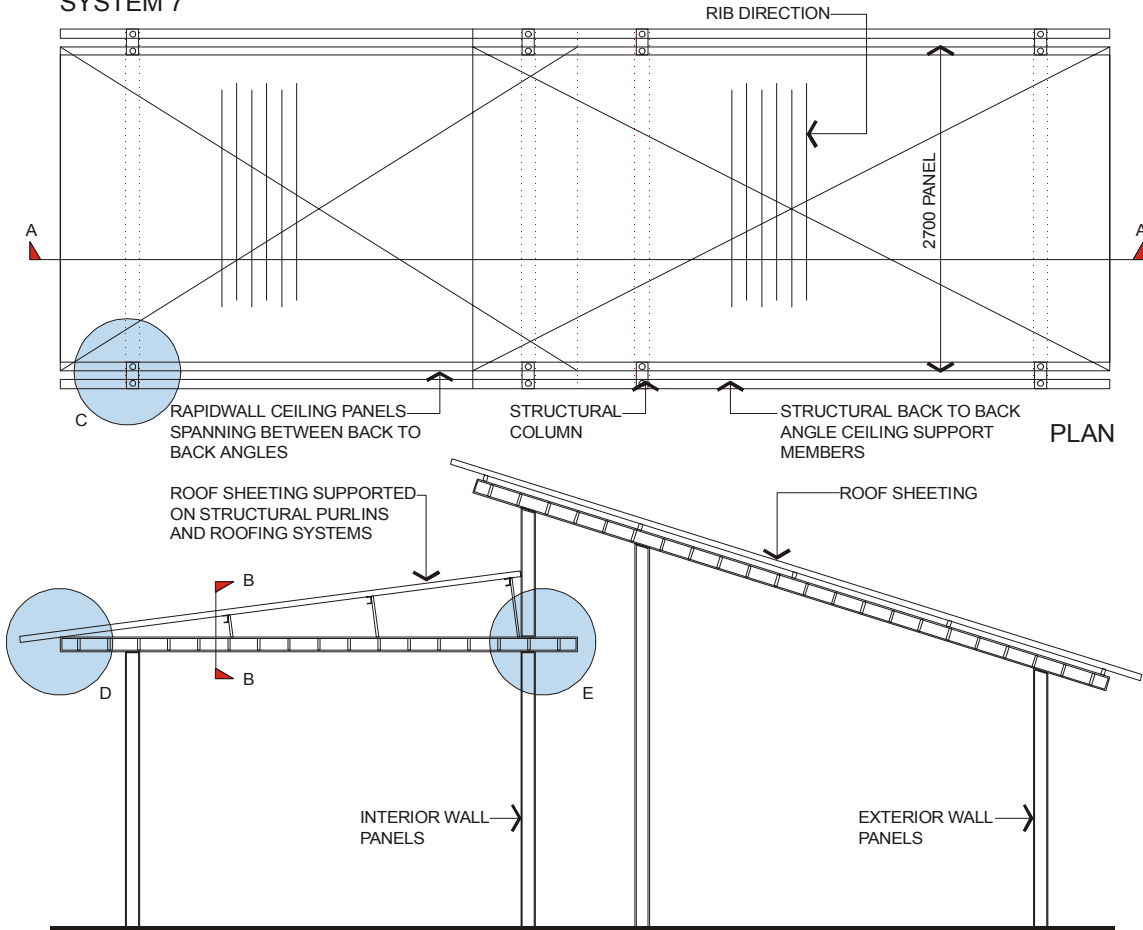
INITIAL CONTACT BETWEEN THE CLIENT, ARCHITECT, ENGINEER AND RAPID BUILDING SYSTEMS WILL ENSURE THE BUILDING SYSTEM IS DESIGNED TO SUIT SPECIFIC PROJECT REQUIREMENTS, IN TERMS OF STRUCTURAL ADEQUACY, FIRE RATINGS, ACOUSTIC/THERMAL PERFORMANCE, COSTINGS AND APPEARANCE.

CONSTRUCTION NOTES:

1. EXPRESSED CONTROL JOINTS TO BE CLOSED CELL POLYETHYLENE FILLER STRIPS AND BACKING RODS WITH EXTERIOR CONSTRUCTION GRADE PAINTABLE POLYURETHANE SEALANTS.
2. COATING SYSTEMS TO BE APPROVED SOLVENT BASED SEALER-BINDER PREPARATION COAT AND ACRYLIC EXTERIOR TEXTURE COATS AND PAINT SYSTEMS, ALL APPLIED TO MANUFACTURERS RECOMMENDATIONS.
3. ALL STRUCTURAL MEMBERS TO BE DESIGNED TO SUIT EACH INDIVIDUAL PROJECT BY CONSULTING STRUCTURAL ENGINEERS.
4. REFER TO RAPID BUILDING SYSTEMS STANDARD DETAILS FOR SPECIFIC FIXING/FASTENER SIZES, CLOSURE STUD, TOP PLATE/CAPPINGS AND BASE KEEPER SPECIFICATIONS.



SYSTEM 7



GENERAL NOTE:

INITIAL CONTACT BETWEEN THE CLIENT, ARCHITECT, ENGINEER AND PAPID BUILDING SYSTEMS WILL ENSURE THE BUILDING SYSTEM IS DESIGNED TO SUIT SPECIFIC PROJECT REQUIREMENTS, IN TERMS OF STRUCTURAL ADEQUACY, FIRE RATINGS, ACOUSTIC / THERMAL PERFORMANCE, COSTINGS AND APPEARANCE.